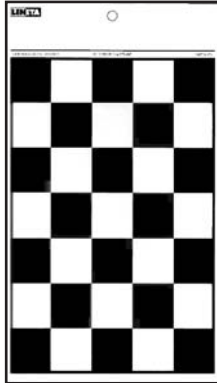


Checkerboard Charts / Spreading Rate Charts

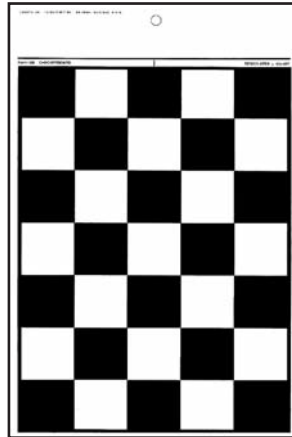
One of the earliest hiding power test surfaces was linoleum with a black and white checkerboard pattern. This was soon replaced by sealed paperboard charts of which Forms 10H and 10H-BG Spreading Rate Charts are typical examples. Designed for brushout tests at specified spreading rates, such as in ASTM Method D 344 and Canadian 1-GP-71, they are also used for drawdown applications like their smaller counterparts, Forms 10A and 10B. Black and gray squares in Form 10H-BG provide reduced contrast for testing coatings with lower hiding power.



Form 10A

5-1/2 x 10 in
140 x 254 mm

Design Area = 275 cm²



Form 10B

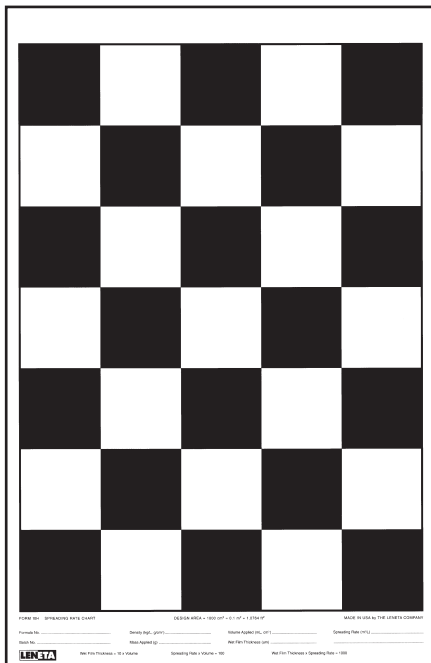
7-5/8 x 11-3/8 in
194 x 289 mm

Design Area = 425 cm²

Packaging			
Form No.	Box Quantity	Boxes per Case	Box Weight
10A	250	6	6 lb
10B	250	4	9 lb
10H	125	4	11 lb
10H-BG	125	4	11 lb

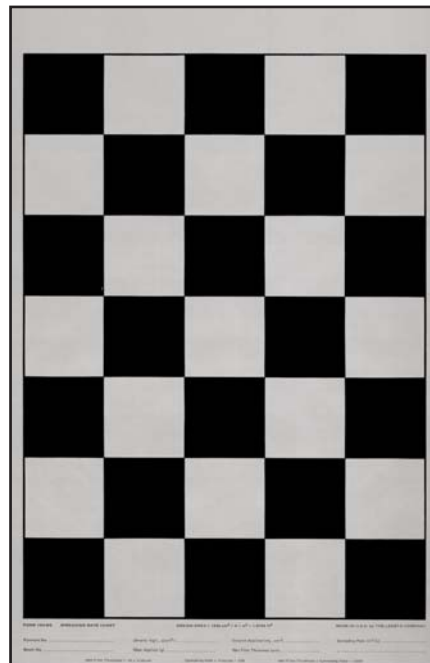
Spreading Rate Charts

Design Area = 1.076 ft² (1000 cm²)



Form 10H

11-1/4 x 17-1/4 in
286 x 438 mm



Form 10H-BG

11-1/4 x 17-1/4 in
286 x 438 mm