

Gray Scale Charts

For Visual Hiding Power Ratings

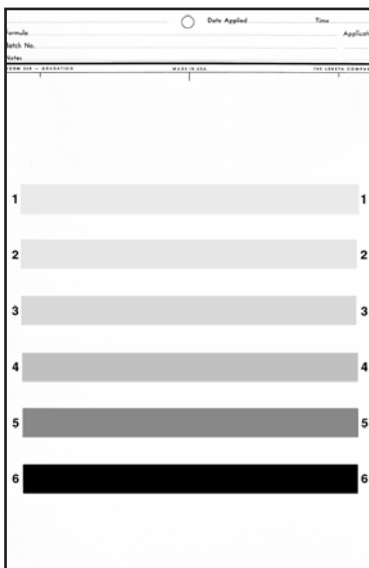
Large-Area Roller or Brush Application



Form CU-1M Test Area 6 ft² (5574 cm²) 24 x 37-1/4 in (610 x 946 mm)
Conforms with ASTM D5150, Hiding Power of Architectural Paints Applied by Roller

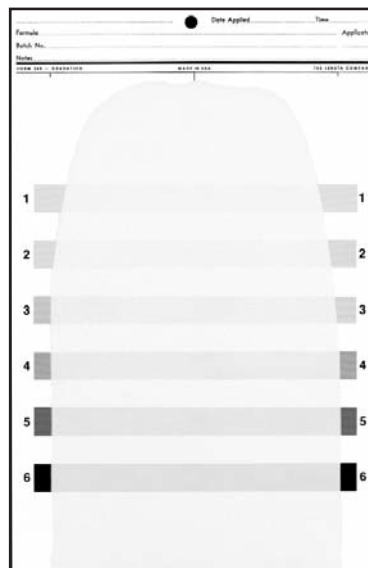
These are sealed paint test charts with six stripes on a white field, ranging in shade from very light gray to black. The stripes are numbered 1 to 6, representing uniform steps of increasing contrast. The hiding power of the applied coatings is rated as the number of the darkest stripe that is completely (or almost completely) obscured, at a specified thickness or spreading rate. Form CU-1M is used for more practical large-area brush or roller applications as in ASTM D 5150. Applications on Form 24B are with a drawdown blade. See Appendix, Page 33 for gray scale values.

Drawdown Application



Form 24B

7-5/8 x 11-3/8 in
194 x 289 mm



**Typical Drawdown Test
on Form 24B**

PACKAGING

Form No.	Box Quantity	Boxes per Case	Box Weight
24B	250	4	9 lb
CU-1M	100	1	47 lb